

ThermoPro™

Guide

TP8 Series

Top-end IR Thermographic Camera

- Rugged and Ergonomical Design
- High-resolution Image Presentation
- Touch Screen
- Bluetooth Voice Control
- Infra Fusion
- Two kinds of Storage Capacity
- Remote Control Handle
- Productive Auto Focus



Wuhan Guide Infrared Co.,Ltd.

Address: No.26,Shucheng Rd, Wuhan 430070, P.R.China.

Tel: +86-27-87671991 / +86-27-87671925 / +86-27-87671983

Mobile: +86-13971187175

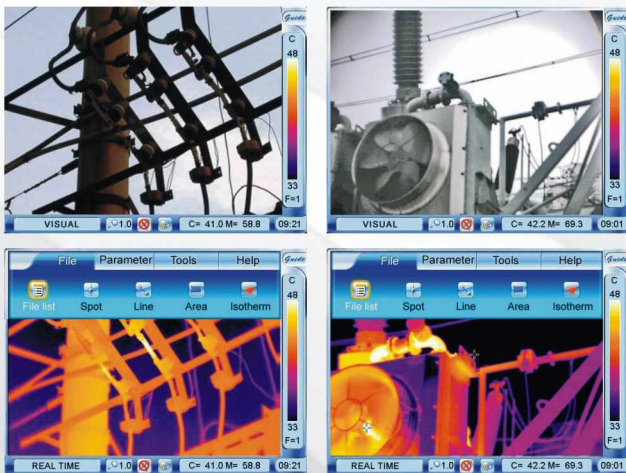
Fax: +86-27-87671927

Email: overseas@guide-infrared.com

Website: www.guide-infrared.com

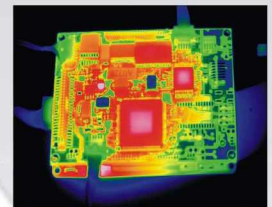
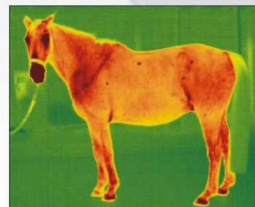
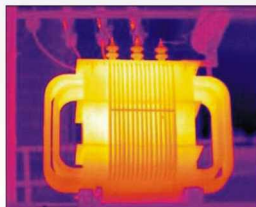
ThermoPro™ TP8 series

Improved on the most advanced IR package available now, integrating multiple technologies never used in the industry, ThermoPro™ TP8 is another ingenious solution Guide IR provides for professional IR thermographers around the world. In a rugged, compact and durable magnalium casing, ThermoPro™ TP8 offers a wide assortment of unexpected features that enable thermographers to work with unprecedented efficiency and productivity. Exceeding all the existing IR radiometric cameras, it sets another new standard of the first-class products for the whole industry.



Applications of ThermoPro™ TP8 IR Thermographic Camera

- 1 Predictive and preventative maintenance
- 2 Electricity inspections
- 3 Building diagnostics
- 4 Veterinarian helper
- 5 Research&Development



Features and Benefits



Rugged and Ergonomical Design

With a rugged, compact and durable magnesium casing, TP8 ensures high work efficiency and reliability in any tough environment.

High-resolution Image Presentation

Utilizing the latest generation high-performance IR detector with over 110000 pixels, the camera offers extraordinary high resolution, high sensitivity and high accuracy presented by real-time, noise-free 16-bit thermal images.



Touch Screen

The 3.5" TFT LCD touch screen delivers more advanced and complicated analysis functions that buttons can never do. It gives great help for pro-level on-board analysis work.

Bluetooth Voice Control

TP8 is the first voice-control infrared camera in the world. The camera can be remotely controlled via bluetooth headset. One camera can be registered with 4 different ID.

Infra Fusion

The new Thermal Fusion Technology allows you to overlay the thermal image directly on the corresponding visual image. It would help you identify where the problem exactly is and give the solution.



Two kinds of Storage Capacity

Benefiting from 2G SD card and Uflash, TP8 enables you to save big amount of thermal images without changing card frequently.

Remote Control Handle

The detachable handle makes inspection work more flexible. User can control the camera via buttons on the handle and look closely on the target at arm's height.



Productive Auto Focus

Manual and auto focus capabilities allow operators great flexibility when adjust images in a range of settings. Auto focus helps new users to be productive sooner.



TP8

TP8S

Image Performance		
Detector Type	Focal plane array (FPA) uncooled microbolometer, 384 × 288 pixels, 25 μm	
Spectral range	8 ~ 14 μm	
Field of View(FOV) Version A	Standard lens 21.7° × 16.4° /25mm Optional wide-angle lens 44.3° × 33.9° /11.8mm Optional tele lens 7.8° × 5.9° /70mm	
Field of View(FOV) Version B	Standard lens 15.6° × 11.7° /35mm Optional wide-angle lens 33.4° × 25.4° /16mm Optional tele lens 5.5° × 4.1° /100mm	
Thermal Sensitivity	≤ 0.08°C at 30°C	
Image Presentation		
External Display	3.5" high resolution color VGA LCD, 640 × 480 pixels	
Image display	Thermal image alone/ Visual image alone/ Picture in picture/Image fusion	
Measurement		
Temperature Range	-20°C to 800°C (Up to +2000°C optional)	-20°C to 600°C (Up to +2000°C optional)
Accuracy	± 2°C or ± 2% of reading	
Measurement Modes	Spot, area, isotherm, line profile, auto hot spot, auto alarm	
	Auto hot/cold spot, auto alarm for temperature above or below; spots, areas displaying either max, min, or average, vertical & horizontal line profile, delta-t, histogram & isotherm in	
	live/zoom/frozen/saved image & video Auto hot spot & auto alarm in live/ zoomed image & video; 10 movable spots, 10 movable & changeable areas displaying either max, min, or average, vertical & horizontal line profile, histogram & isotherm in live/zoomed/frozen/saved image & video	
Image Storage		
Type	Removable 2GB SD card or built-in flash memory	
Voice Annotation	Up to 60 seconds per file	
Laser Locator		
Classification Type	Class 2 semiconductor laser	
Power System		
Battery Type	Rechargeable Li-ion Camcorder battery, filed-replaceable	
Battery Operating time	Over 2.5 hours continuous operation	
Environmental Specification		
Operating Temperature	-20°C to 60°C	
Storage Temperature	-20°C to 60°C	
Encapsulation	IP54	
Interface		
USB 2.0	Image and real-time video transfer to PC Real-time control of the camera on PC	Image transfer to PC
RS232 Communication	Control of the camera on PC	Control of the camera on PC
Physical Characteristics		
Size	186mm × 106mm × 83mm(standard model)	
Weight	1.1kg(including battery & LCD)	